



PV POWER TECH

PV Modules | EPC | Solar Water Pumps | Rooftops



***ENERGIZING A
SUSTAINABLE FUTURE***

72 FULL CELL MODULE DETAILS - POLYCRYSTALLINE

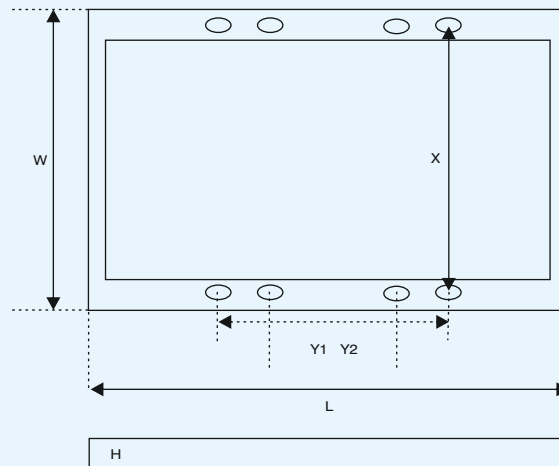
Indian Cells : I-Series

Imported Cells : E-Series

ELECTRICAL PARAMETERS

Model Name	ECO 320	ECO 325	ECO 330H	ECO 335H
Cell Configuration {Nos}	12 x 6 {72}			
Pmax (W) { 0 + 3% }	320	325	330	335
Voc (V) { 0 +/- 3.0% }	45.60	45.80	46.15	46.22
Isc (A) { 0 +/- 3.0% }	9.08	9.13	9.15	9.26
Vmax (V)	37.25	37.60	37.90	38.06
Imax (A)	8.61	8.65	8.73	8.80
Fill Factor { % }	77.29%	77.72%	78.35%	78.25%
Module Efficiency { % }	16.51%	16.77%	17.01%	17.28%
Maximum System Voltage (VDC)	1000		1500	
Nominal Operating Cell Temperature (NOCT) {°C}	43 +/- 2			
Temperature Co-Efficient of Pmax { %/°C }	-0.39			
Temperature Co-Efficient of Voc { %/°C }	-0.31			
Temperature Co-Efficient of Isc { %/°C }	0.06			

Electrical values measured at STC : 25°C, 1.5AM, 1000W/m²



MECHANICAL PARAMETERS

Parameters	ECO 320	ECO 325	ECO 330H	ECO 335H
L - Length of Module {mm}	1960 mm +/- 1.0 mm			
W - Width of module {mm}	989 mm +/- 1.0 mm			
H - Height of Module {mm}	40 mm +/- 0.5 mm			
X - Pitch Distance {mm}	950 mm +/- 1.0 mm			
Y- Pitch Distance {mm}	1200 , 1600 mm +/- 1.0 mm			
Mounting Holes {mm}	8 oblong of size 6.5 mm x 10mm			
Grounding Holes {mm}	2 nos. of dia. 4 mm on length side			
Cells	Polycrystalline Solar Cells 156.75 mm x 156.75 mm			
Junction Box	TUV Approved, IP67 rated terminal Junction Box with 3 bypass diodes			
Cables	1000 mm Long, 4 mm ² cables with MC4 compatible connectors			
Weight	22 kgs			

Note:

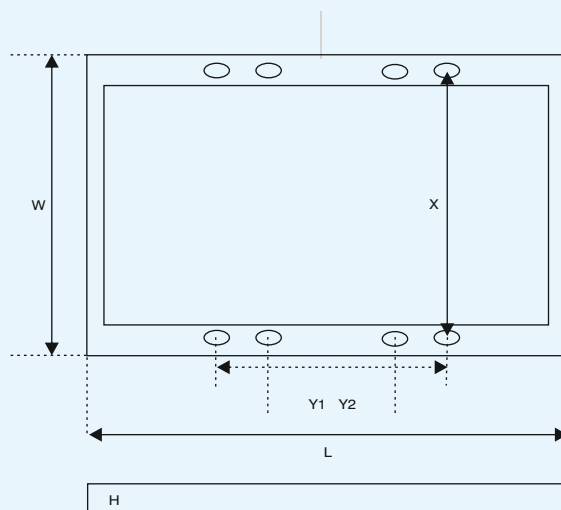
- PV Power Tech reserves the right to change the specifications without prior notice.
- All measurements and warranty/guarantee applicability under standard test conditions (1000W/m², 25°C, AM 1.5).

72 FULL CELL MODULE DETAILS - MONOCRYSTALLINE

ELECTRICAL PARAMETERS

Model Name	ECO 360M	ECO 370M	ECO 390MH	ECO 400MH
Cell Configuration {Nos}	12 x 6 {72}			
Pmax (W) { 0 + 3% }	360	370	390	400
Voc (V) { 0 +/- 3.0% }	47.60	47.90	48.85	49.28
Isc (A) { 0 +/- 3.0% }	9.53	9.76	10.10	10.2
Vmax (V)	39.65	39.60	40.14	40.46
Imax (A)	9.08	9.35	9.72	9.89
Fill Factor { % }	79.37%	79.20%	79.08%	79.61%
Module Efficiency { % }	18.57%	19.10%	19.62%	20.12%
Maximum System Voltage (VDC)	1000		1500	
Nominal Operating Cell Temperature (NOCT) { °C }	43 +/- 2		43 +/- 2	
Temperature Co-Efficient of Pmax { %/°C }	-0.38		-0.40	
Temperature Co-Efficient of Voc { %/°C }	-0.36		-0.30	
Temperature Co-Efficient of Isc { %/°C }	0.07		0.05	

Electrical values measured at STC : 25 °C, 1.5AM, 1000W/m²



MECHANICAL PARAMETERS

Parameters	ECO 360M	ECO 370M	ECO 390MH	ECO 400MH
L - Length of Module {mm}	1960mm +/- 1.0 mm		1986mm +/- 1.0 mm	
W - Width of module {mm}	989 mm +/- 1.0 mm		1001 mm +/- 1.0 mm	
H - Height of Module {mm}	40 mm +/- 0.5 mm		35 or 40 mm +/- 0.5 mm	
X - Pitch Distance {mm}	950 mm +/- 1.0 mm		962 mm +/- 1.0 mm	
Y- Pitch Distance {mm}	1200 , 1600 mm +/- 1.0 mm		1176 , 1676 mm +/- 1.0 mm	
Mounting Holes {mm}	8 oblong of size 6.5mm x 10mm		8 oblong of size 8mm x 12mm	
Grounding Holes {mm}	2 nos. of dia. 4 mm on length side			
Cells	156.75 x 156.75 mm, 5bus-bar, Monocrystalline		158.75 x 158.75 mm, 5bus-bar, MonoPERC	
Junction Box	TUV Approved, IP67 rated terminal Junction Box with 3 bypass diodes			
Cables	1000 mm Long, 4 mm2 cables with MC4 compatible connectors			
Weight	22 kgs		19.8 kgs for 35 x 35mm 20.0 kgs for 40 x 35mm	

Note:

1. PV Power Tech reserves the right to change the specifications without prior notice.

2. All measurements and warranty/guarantee applicability under standard test conditions (1000W/m², 25°C, AM 1.5).

PREMIUM QUALITY

PV Power Tech modules are manufactured using state-of-the-art automated manufacturing processes that ensure consistency in production and high quality standards laid down by ISO 9001 certifications. Our Plant is also certified for ISO 14001.

ARRAY OF APPLICATIONS

Our modules are suitable for a wide range of applications - from individual homes to industrial roofs and ground-mounted systems. They are compatible with all standard mounting systems as well as inverters. The ECO Series is available as both framed and laminates. Additional customizations like black backsheets and black frames too are offered for aesthetic appeal. The same are offered with variable frame sizes.

RELIABILITY

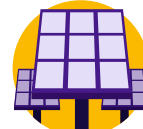
The ECO Series modules are backed by a standard 10 years limited manufacturing warranty, power warranties of minimum 90% of the rated output power at the end of 11 years and 80% at the end of 25 years. The modules offer strong resistance to mechanical loads / snow loads upto 5,400 Pa.



**ISO
CERTIFIED**



**OHSAS
CERTIFICATION**



**500+ MW
MODULES
INSTALLED**



**MAKE IN
INDIA**



**BUREAU OF INDIAN
STANDARD
CERTIFICATION**



**100+ MW
SOLAR ROOFS
INSTALLED**



**STATE-OF-THE-ART
MACHINERY**



**IMPECCABLE
QUALITY**



**EXPORTERS
WORLDWIDE**

PV Power Technologies Pvt.Ltd.

Factory: Plot No.60, Tarapur Textile Park,
At- Village Gundale, Post-Mahagaon,
Boisar (E), Dist./Tal. Palghar, MAH - 401501.

Corp. Office: B-907, Kanakia Wall Street,
Andheri Kurla Road, Andheri (E), Mumbai - 400 093.
Tel: +91 22 42214800 Email: info@pvpowertech.com

Website: www.pvpowertech.com



**CLEAN
ENERGY
COUNCIL
MEMBER**

